



CONSUMER GUIDE TO **ELECTRIC VEHICLES**

SEPTEMBER 2024



CONSUMER GUIDE TO **ELECTRIC VEHICLES**

WHY BUY AN ELECTRIC CAR?

Electric vehicles (EVs) are fun to drive, safe, comfortable, and convenient to refuel. They also cost less to operate per mile and produce no tailpipe emissions.

Today's electric cars do everything a gas car can do and more. Most are high-performing vehicles with silent torque and superb handling and can travel ~250 miles on a charge (many can go farther).

Although most EV drivers prefer to charge at home for its convenience and savings, a growing national network of public charging sites enables more consumers—even those who can't plug in at home—to consider purchasing an EV.

From initial vehicle manufacturing to vehicle retirement, EVs emit 64% less in greenhouse gases on average than traditional gas-powered vehicles do.¹ Because EVs are powered by electricity instead of gasoline, they shift our energy reliance to domestic sources while also reducing emissions. Cutting vehicle emissions is especially critical in communities adjacent to heavily trafficked roadways. As local power generation grows cleaner, every electric car charged on that grid gets cleaner too which further increases broader public health and climate benefits.

Compared to the traditional ICE vehicle market, the EV market is relatively new, and therefore still developing. Over time, the used EV market will grow and a wider variety of households will be able to take advantage of the EV market.



¹ Woody, M., Vaishnav, P., Keoleian, G. A., De Kleine, R., Kim, H. C., Anderson, J. E., & Wallington, T. J. (2022). The role of pickup truck electrification in the decarbonization of light-duty vehicles. *Environmental Research Letters*, 17(3), 034031.

EV 101

This guide highlights the two types of EVs that plug into the grid to recharge their batteries:

battery-electric (or all-electric) **vehicles** and **plug-in hybrids**.



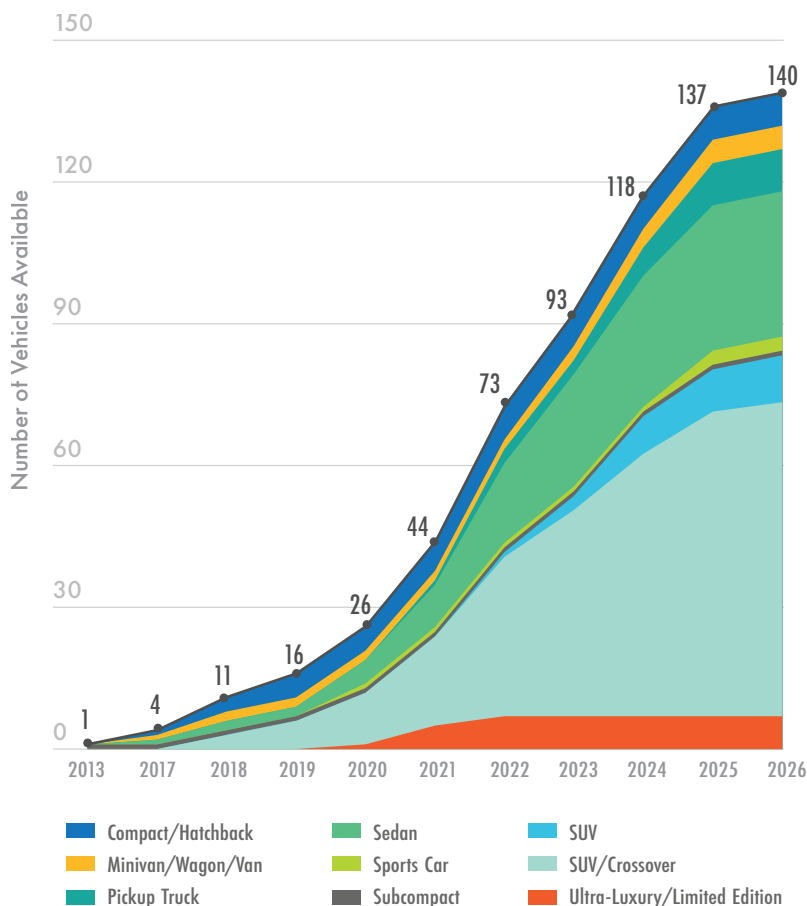
ALL-ELECTRIC VEHICLES are powered solely by an electric motor and battery. They burn no gasoline or diesel fuel and have no tailpipe emissions. Battery technology is rapidly advancing, vehicle costs are declining, and range between charges is increasing.



PLUG-IN HYBRIDS pair an electric motor and battery with an internal-combustion engine. Plug-in hybrids drive on electricity until the battery is mostly empty. Once this occurs, the engine turns on and the car drives like a conventional hybrid.

Conventional hybrids, sometimes called “electrified vehicles,” refuel only with gasoline. Because they do not plug in, they are not included in this guide.

FIGURE 1: VEHICLE AVAILABILITY THROUGH 2026



Electric cars are available in almost all body styles, from sedans to SUVs, hatchbacks to wagons. Each year, automakers expand their offerings. Some offer gasoline, battery- electric, and plug-in hybrid options in the same model. Many now say they aspire to electrify their entire fleet in response to global climate change. EV range is increasing, and costs are falling thanks to better batteries and components and to rising production volumes.

Based on EPRI’s analysis of automaker announcements, the average range of all-electric vehicles through 2021 was 289 miles. This will increase to 295 miles through 2025.

In response, US consumers are warming up to EVs, and sales have continued to rise. Almost 50 EV models are available new today, and more than 130 different models are expected by 2025 (Figure 1). All EVs are available nationwide. ZEV states however, typically have more inventory in their local dealerships than non-ZEV states.



BATTERY-ELECTRIC CARS

VEHICLE MODEL ELECTRIC RANGE (mi) PAGE

SUV/CROSSOVER		
Acura ZDX	300	6
Audi Q4 e-tron quattro	241	6
Audi Q4 e-tron Sportback quattro	241	7
Audi Q6 e-tron	307	7
Audi Q6 e-tron Sportback	TBA	7
Audi Q8 e-tron	285	7
Audi Q8 e-tron Sportback	300	8
BMW iX	281	8
Cadillac Escalade IQ	460	8
Cadillac Lyriq	300	8
Cadillac Optiq	300	9
Cadillac Vistiq	300	9
Chevrolet Blazer EV	283	9
Chevrolet Equinox EV	319	9
Ford Mustang Mach-E AWD	250-320	10
Genesis GV60	235-294	10
Genesis GV90	300	10
GMC Hummer EV SUV	303-314	10
Honda Prologue	296	11
Hyundai Ioniq 5	260-303	11
Hyundai Ioniq 5 N	221	11
Hyundai Ioniq 9	300	11
Jaguar I-Pace	246	12
Jeep Wagoneer S	300	12
Kia EV3	350	12

SUV/CROSSOVER		
Kia EV6	230-310	12
Kia EV9	304	13
Land Rover Range Rover BEV	300	13
Lexus RZ 450e	266	13
Lucid Motors Gravity	440	13
Mercedes-Benz EQB	251	14
Mercedes-Benz EQC	259	14
Mercedes-Benz EQE SUV	307	14
Mercedes-Benz EQS SUV	339	14
Mini Countryman BEV	230	15
Nissan Ariya	216-304	15
Polestar 3	315	15
Polestar 4	300	15
Porsche Macan EV	250	16
Rivian R1S	410	16
Rivian R2	300	16
Subaru Solterra	227	17
Tesla Model X	335	17
Tesla Model Y	260-320	17
Toyota bZ4X	252	18
Volkswagen ID.4	291	18
Volvo C40 Recharge	297	18
Volvo EX30	275	19
Volvo EX90	308	19
Volvo XC40 Recharge	293	19

Range for battery-electric vehicles is all-electric range. Range for plug-in hybrids is all-electric/combined (electric + gas) range. Sources: www.fueleconomy.gov and manufacturer websites.

VEHICLE MODEL ELECTRIC RANGE (mi) PAGE

SEDAN

Audi A6 e-tron	388	20
Audi e-tron GT	249	20
BMW i4	301	20
BMW i5	TBD	21
BMW i7	300	21
Dodge Charger EV	350	21
Genesis Electrified G80	282	22
Hyundai Ioniq 6	240-361	22
Mercedes-Benz EQS	352	22
Polestar 2	247-320	23
Tesla Model 3	272-363	23
Tesla Model S	402	23

MINIVAN/WAGON/VAN

Ford E-Transit	159	24
Mercedes-Benz eSprinter	206	24
Volkswagen ID.BUZZ	242	24

PICKUP TRUCK

Chevrolet Silverado EV	440	25
Ford F-150 Lightning	240-320	25
GMC Hummer EV Pickup	314	25
GMC Sierra EV Denali	440	25
Ram 1500 REV	500	26
Rivian R1T	420	26
Tesla Cybertruck	340	26

SPORTS CAR

Porsche 718 Boxster EV	250+	27
Porsche 718 Cayman EV	250+	27
Porsche Taycan	274	27

ULTRA-LUXURY/LIMITED EDITION

Lucid Air Dream AWD	451	28
Porsche Taycan 4 Cross Turismo	277	28
Porsche Taycan Turbo	275	28

COMPACT/HATCHBACK

Fiat 500e	162	28
Hyundai Kona Electric	200-261	29
Kia Niro EV	253	29
Mini Cooper SE	114	29
Nissan LEAF Plus	212	29

Range for battery-electric vehicles is all-electric range. Range for plug-in hybrids is all-electric/combined (electric + gas) range. Sources: www.fueleconomy.gov and manufacturer websites.



PLUG-IN HYBRID CARS

VEHICLE MODEL	ELECTRIC RANGE (mi)	ELECTRIC + GAS (mi)	PAGE
SUV/CROSSOVER			
Alfa Romeo Tonale	33	320	30
Audi Q5 TFSI e	23	390	30
BMW X5 xDrive50e	40	400	31
Dodge Hornet R/T	32	360	31
Hyundai Tucson PHEV	33	420	31
Jeep Grand Cherokee 4xe	25	470	32
Jeep Wrangler 4xe	22	370	32
Kia Sorento PHEV	30	460	32
Kia Sportage PHEV	34	430	32
Land Rover Range Rover PHEV	53	480	33
Land Rover Range Rover Sport PHEV	53	480	33
Lexus NX 450h+	37	550	33
Lexus RX 450h+	37	500	33
Lexus TX 550h+	33	450	34
Lincoln Corsair Grand Touring	27	420	34
Mazda CX-70	26	490	34
Mazda CX-90	26	490	34
Mercedes-Benz GLE 350e	54	TBA	35
Mercedes-Benz GLE 450e	49	412	35
Mini Countryman All4 PHEV	12	270	35
Mitsubishi Outlander PHEV	38	420	35
Porsche Cayenne E-Hybrid	17	430	36
Porsche Cayenne E-Hybrid Coupe	17	430	36
Subaru Crosstrek Hybrid	17	480	36
Toyota RAV4 Prime	42	600	37
Volvo XC60 Recharge PHEV	35	560	37
Volvo XC90 Recharge PHEV	32	530	37

Range for battery-electric vehicles is all-electric range. Range for plug-in hybrids is all-electric/combined (electric + gas) range. Sources: www.fueleconomy.gov and manufacturer websites.

VEHICLE MODEL ELECTRIC RANGE (mi) ELECTRIC + GAS (mi) PAGE

SEDAN			
Audi A7 TFSI e	26	410	38
BMW 330e	23	320	38
BMW 530e	21	350	38
BMW 550e xDrive	TBA	TBA	38
BMW 745e xDrive	16	290	39
BMW 750e xDrive	36	470	39
Porsche Panamera 4 E-Hybrid	19	480	39
Volvo S90 Recharge PHEV	38	520	39

MINIVAN/WAGON/VAN			
Chrysler Pacifica Hybrid	32	520	40
Volvo V60 Recharge PHEV	41	530	40

PICKUP TRUCK			
Jeep Gladiator 4xe	21	370	40
Ram 1500 Ramcharger	145	690	40

ULTRA-LUXURY/LIMITED EDITION			
Ferrari SF90 Stradale Coupe	9	330	41
Porsche Cayenne Turbo S E-Hybrid	15	370	41
Porsche Cayenne Turbo S E-Hybrid Coupe	15	370	41
Porsche Panamera Turbo S E-Hybrid	31	430	41

COMPACT/HATCHBACK			
Ford Escape PHEV	37	530	42
Kia Niro PHEV	33	560	42
Toyota Prius Prime	44	600	42

Range for battery-electric vehicles is all-electric range. Range for plug-in hybrids is all-electric/combined (electric + gas) range. Sources: www.fueleconomy.gov and manufacturer websites.



BATTERY-ELECTRIC CARS

- Battery-electric cars available as of August 2024; discontinued models or older model years may still be available, and some 2025 model years are already available.
- Range sources: www.fueleconomy.gov and automaker specifications.
- Range can vary is impacted by driving conditions such as climate, topography, and traffic.
- Range per hour of charging assumes home or workplace Level 2 charging (i.e., 240V).
- Fast-charging times are provided by automakers or calculated from automaker statements. These rates vary due to many factors, including battery charge level and ambient temperature.
- Starting manufacturer suggested retail price (MSRP) is retrieved from automaker websites and may vary.
- Models that offer different configurations and battery sizes may show multiple numbers for driving range, charging time, and starting MSRP.
- Vehicles are available nationwide unless designated “Select Markets” in their individual listing.
- Despite industry classifications of five-door vehicles as crossovers or compact SUVs, this guide categorizes them as hatchbacks unless they are offered with all-wheel drive.

SUV/CROSSOVER



Photo Courtesy Acura

Acura ZDX

EPA Electric Range: 300 mi

Max Home/Work Charging Power: 11.5 kW
(29.4 miles/hour of charge)

Fast Charging Info: 190 kW
(81 miles in 10 minutes of charge)

Starting MSRP: \$64,500



Photo Courtesy Audi

Audi Q4 e-tron quattro

EPA Electric Range: 241 mi

Max Home/Work Charging Power: 9.6 kW
(27 miles/hour of charge)

Fast Charging Info: 125 kW
(80 miles in 10 minutes of charge)

Starting MSRP: \$55,200

SUV/CROSSOVER



Photo Courtesy Audi

Audi Q4 e-tron Sportback quattro

EPA Electric Range: 241 mi

Max Home/Work Charging Power: 9.6 kW
(27 miles/hour of charge)

Fast Charging Info: 125 kW
(80 miles in 10 minutes of charge)

Starting MSRP: \$58,200



Photo Courtesy Audi

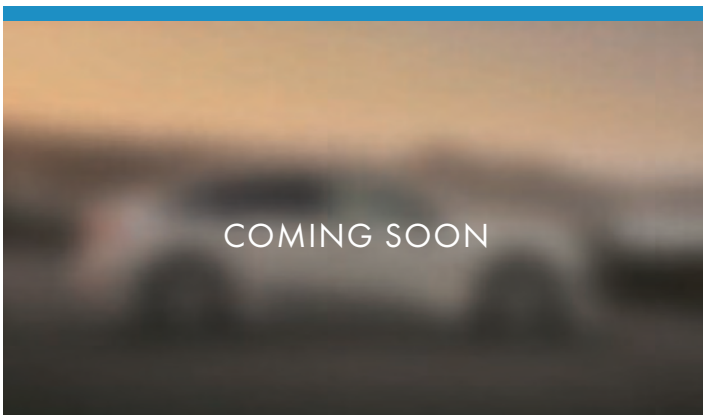
Audi Q6 e-tron

EPA Electric Range: 307 mi

Max Home/Work Charging Power: 19.2 kW
(30.7 miles/hour of charge)

Fast Charging Info: 270 kW
(135 miles in 10 minutes of charge)

Starting MSRP: \$66,000



COMING SOON

Audi Q6 e-tron Sportback

EPA Electric Range: TBA

Max Home/Work Charging Power: TBA
(miles/hour of charge TBA)

Fast Charging Info: TBA
(80% in 30 minutes of charge)

Starting MSRP: \$69,000



Photo Courtesy Audi

Audi Q8 e-tron

EPA Electric Range: 285 mi

Max Home/Work Charging Power: 11 kW
(22 miles/hour of charge)

Fast Charging Info: 150 kW
(160 miles in 30 minutes of charge)

Starting MSRP: \$74,400



SUV/CROSSOVER



Photo Courtesy Audi

Audi Q8 e-tron Sportback

EPA Electric Range: 300 mi

Max Home/Work Charging Power: 11 kW
(22 miles/hour of charge)

Fast Charging Info: 150 kW
(160 miles in 30 minutes of charge)

Starting MSRP: \$77,800



Photo Courtesy BMW

BMW iX

EPA Electric Range: 281 mi

Max Home/Work Charging Power: 11 kW
(24 miles/hour of charge)

Fast Charging Info: 195 kW
(90 miles in 10 minutes of charge)

Starting MSRP: \$108,900



Photo Courtesy Cadillac

Cadillac Escalade IQ

EPA Electric Range: 460 mi

Max Home/Work Charging Power: 19.2 kW
(36.5 miles/hour of charge)

Fast Charging Info: 350 kW
(100 miles in 10 minutes of charge)

Starting MSRP: \$127,700



Photo Courtesy Cadillac

Cadillac Lyriq

EPA Electric Range: 300 mi

Max Home/Work Charging Power: 19.2 kW
(6 miles/hour of charge)

Fast Charging Info: 190 kW
(76 miles in 10 minutes of charge)

Starting MSRP: \$57,195

SUV/CROSSOVER



Photo Courtesy Cadillac

Cadillac Optiq

EPA Electric Range: 300 mi

Max Home/Work Charging Power: 19.2 kW
(55 miles/hour of charge)

Fast Charging Info: 150 kW
(79 miles in 10 minutes of charge)

Starting MSRP: \$52,895



Photo Courtesy Cadillac

Cadillac Vistiq

EPA Electric Range: 300 mi

Max Home/Work Charging Power: TBA
(miles/hour of charge TBA)

Fast Charging Info: TBA
(miles in minutes of charge TBA)

Starting MSRP: TBA



Photo Courtesy Chevrolet

Chevrolet Blazer EV

EPA Electric Range: 283 mi

Max Home/Work Charging Power: 11 kW
(29.8 miles/hour of charge)

Fast Charging Info: 190 kW
(78 miles in 9.5 minutes of charge)

Starting MSRP: \$47,600



Photo Courtesy Chevrolet

Chevrolet Equinox EV

EPA Electric Range: 319 mi

Max Home/Work Charging Power: 11.5 kW
(11.5 miles/hour of charge)

Fast Charging Info: 150 kW
(70 miles in 10 minutes of charge)

Starting MSRP: \$41,900



SUV/CROSSOVER



Photo Courtesy Ford

Ford Mustang Mach E AWD

EPA Electric Range: 250-320 mi

Max Home/Work Charging Power: 10.5 kW
(28 miles/hour of charge)

Fast Charging Info: 150 kW
(168 miles in 45 minutes of charge)

Starting MSRP: \$39,995



Photo Courtesy Genesis

Genesis GV60

EPA Electric Range: 235-294 mi

Max Home/Work Charging Power: 10.9 kW
(34 miles/hour of charge)

Fast Charging Info: 350 kW
(171 miles in 18 minutes of charge)

Starting MSRP: \$52,000



Photo Courtesy Genesis

Genesis GV90

EPA Electric Range: 300 mi

Max Home/Work Charging Power: TBA
(miles/hour of charge TBA)

Fast Charging Info: TBA
(miles in minutes of charge TBA)

Starting MSRP: \$100,000



Photo Courtesy GMC

GMC Hummer EV SUV

EPA Electric Range: 303-314 mi

Max Home/Work Charging Power: 19.2 kW
(30 miles/hour of charge)

Fast Charging Info: 350 kW
(100 miles in 10 minutes of charge)

Starting MSRP: \$96,550

SUV/CROSSOVER



Photo Courtesy Honda

Honda Prologue

EPA Electric Range: 296 mi

Max Home/Work Charging Power: 11.5 kW
(31.2 miles/hour of charge)

Fast Charging Info: 150 kW
(65 miles in 10 minutes of charge)

Starting MSRP: \$47,400



Photo Courtesy Hyundai

Hyundai Ioniq 5

EPA Electric Range: 260-303 mi

Max Home/Work Charging Power: 10.9 kW
(40.2 miles/hour of charge)

Fast Charging Info: 350 kW
(68 miles in 5 minutes of charge)

Starting MSRP: \$41,800



Photo Courtesy Hyundai

Hyundai Ioniq 5 N

EPA Electric Range: 221 mi

Max Home/Work Charging Power: 10.9 kW
(30.1 miles/hour of charge)

Fast Charging Info: 350 kW
(62.1 miles in 5 minutes of charge)

Starting MSRP: \$66,100



Photo Courtesy Hyundai

Hyundai Ioniq 9

EPA Electric Range: 300 mi

Max Home/Work Charging Power: TBA
(miles/hour of charge TBA)

Fast Charging Info: 350 kW
(80% in 20 minutes of charge)

Starting MSRP: \$50,000



SUV/CROSSOVER



Photo Courtesy Jaguar

Jaguar I-Pace

EPA Electric Range: 246 mi
Max Home/Work Charging Power: 9.6 kW
(24.2 miles/hour of charge)
Fast Charging Info: 100 kW
(187 miles in 87 minutes of charge)
Starting MSRP: \$73,875



Photo Courtesy Jeep

Jeep Wagoneer S

EPA Electric Range: 300 mi
Max Home/Work Charging Power: 11.5 kW
(42.9 miles/hour of charge)
Fast Charging Info: 130 kW
(80% in 23 minutes of charge)
Starting MSRP: \$70,795



Photo Courtesy Kia

Kia EV3

EPA Electric Range: 350 mi
Max Home/Work Charging Power: 11 kW
(33.6 miles/hour of charge)
Fast Charging Info: 100 kW
(139.8 miles in 30 minutes of charge)
Starting MSRP: \$35,000



Photo Courtesy Kia

Kia EV6

EPA Electric Range: 230-310 mi
Max Home/Work Charging Power: 10.9 kW
(30-36.8 miles/hour of charge)
Fast Charging Info: 235 kW
(66 miles in 4.75 minutes of charge)
Starting MSRP: \$40,900

SUV/CROSSOVER



Photo Courtesy Kia

Kia EV9

EPA Electric Range: 304 mi

Max Home/Work Charging Power: 11 kW
(34.7 miles/hour of charge)

Fast Charging Info: 350 kW
(210 miles in 30 minutes of charge)

Starting MSRP: \$54,900



Photo Courtesy Land Rover

Land Rover Range Rover BEV

EPA Electric Range: 300 mi

Max Home/Work Charging Power: 11 kW
(30 miles/hour of charge)

Fast Charging Info: 200 kW
(80% in 25 minutes of charge)

Starting MSRP: \$120,000



Photo Courtesy Lexus

Lexus RZ 450e

EPA Electric Range: 266 mi

Max Home/Work Charging Power: 6.6-11 kW
(15-45 miles/hour of charge)

Fast Charging Info: 150 kW
(45.5-200 miles in 30 minutes of charge)

Starting MSRP: \$55,175



Photo Courtesy Lucid

Lucid Motors Gravity

EPA Electric Range: 440 mi

Max Home/Work Charging Power: 19 kW
(80 miles/hour of charge)

Fast Charging Info: 350 kW
(200 miles in 15 minutes of charge)

Starting MSRP: \$80,000



SUV/CROSSOVER



Photo Courtesy Mercedes-Benz

Mercedes-Benz EQB

EPA Electric Range: 251 mi

Max Home/Work Charging Power: 9.6 kW
(30.4 miles/hour of charge)

Fast Charging Info: 100 kW
(80% in 32 minutes of charge)

Starting MSRP: \$53,050



Photo Courtesy Mercedes-Benz

Mercedes-Benz EQC

EPA Electric Range: 259 mi

Max Home/Work Charging Power: 11 kW
(26.7 miles/hour of charge)

Fast Charging Info: 110 kW
(160.9 miles in 35 minutes of charge)

Starting MSRP: \$77,900



Photo Courtesy Mercedes-Benz

Mercedes-Benz EQE SUV

EPA Electric Range: 307 mi

Max Home/Work Charging Power: 9.6 kW
(26.7 miles/hour of charge)

Fast Charging Info: 170 kW
(194.3 miles in 28 minutes of charge)

Starting MSRP: \$77,900



Photo Courtesy Mercedes-Benz

Mercedes-Benz EQS SUV

EPA Electric Range: 339 mi

Max Home/Work Charging Power: 9.6 kW
(24.2 miles/hour of charge)

Fast Charging Info: 200 kW
(194 miles in 30 minutes of charge)

Starting MSRP: \$104,400

SUV/CROSSOVER



Photo Courtesy Mini

Mini Countryman BEV

EPA Electric Range: 230 mi

Max Home/Work Charging Power: 11 kW
(32.9 miles/hour of charge)

Fast Charging Info: 130 kW
(165.2 miles in 30 minutes of charge)

Starting MSRP: \$45,200



Photo Courtesy Nissan

Nissan Ariya

EPA Electric Range: 216-304 mi

Max Home/Work Charging Power: 7.2 kW
(21.6 miles/hour of charge)

Fast Charging Info: 130 kW
(170 miles in 30 minutes of charge)

Starting MSRP: \$39,590



Photo Courtesy Polestar

Polestar 3

EPA Electric Range: 315 mi

Max Home/Work Charging Power: 11 kW
(28.6 miles/hour of charge)

Fast Charging Info: 250 kW
(217.5 miles in 32 minutes of charge)

Starting MSRP: \$73,400



Photo Courtesy Polestar

Polestar 4

EPA Electric Range: 300 mi

Max Home/Work Charging Power: 11 kW
(27.3 miles/hour of charge)

Fast Charging Info: 200 kW
(215.6 miles in 31 minutes of charge)

Starting MSRP: \$54,900



SUV/CROSSOVER



Porsche Macan EV

EPA Electric Range: 250 mi

Max Home/Work Charging Power: 11 kW
(24.4 miles/hour of charge)

Fast Charging Info: 270 kW
(221 miles in 21 minutes of charge)

Starting MSRP: \$78,800



Rivian R1S

EPA Electric Range: 410 mi

Max Home/Work Charging Power: 11.5 kW
(31.5 miles/hour of charge)

Fast Charging Info: 220 kW
(140 miles in 20 minutes of charge)

Starting MSRP: \$75,900



Rivian R2

EPA Electric Range: 300 mi

Max Home/Work Charging Power: TBA
(80% in 30 minutes of charge)

Fast Charging Info: TBA
(miles in minutes of charge TBA)

Starting MSRP: \$45,000

SUV/CROSSOVER



Subaru Solterra

EPA Electric Range: 227 mi

Max Home/Work Charging Power: 6.6 kW
(20.6 miles/hour of charge)

Fast Charging Info: 100 kW
(69 miles in 30 minutes of charge)

Starting MSRP: \$44,995

Photo Courtesy Subaru



Tesla Model X

EPA Electric Range: 335 mi

Max Home/Work Charging Power: 11.5 kW
(23.9 miles/hour of charge)

Fast Charging Info: 250 kW
(171 miles in 15 minutes of charge)

Starting MSRP: \$81,630

Photo Courtesy Tesla



Tesla Model Y

EPA Electric Range: 260-320 mi

Max Home/Work Charging Power: 11 kW
(44 miles/hour of charge)

Fast Charging Info: 250 kW
(160 miles in 15 hours of charge)

Starting MSRP: \$46,630

Photo Courtesy Tesla



SUV/CROSSOVER



Photo Courtesy Toyota

Toyota bZ4X

EPA Electric Range: 252 mi

Max Home/Work Charging Power: 7.6 kW
(26.5 miles/hour of charge)

Fast Charging Info: 150 kW
(180 miles in 30 minutes of charge)

Starting MSRP: \$43,070



Photo Courtesy Volkswagen

Volkswagen ID.4

EPA Electric Range: 291 mi

Max Home/Work Charging Power: 11 kW
(36.4 miles/hour of charge)

Fast Charging Info: 135 kW
(210 miles in 38 minutes of charge)

Starting MSRP: \$39,735

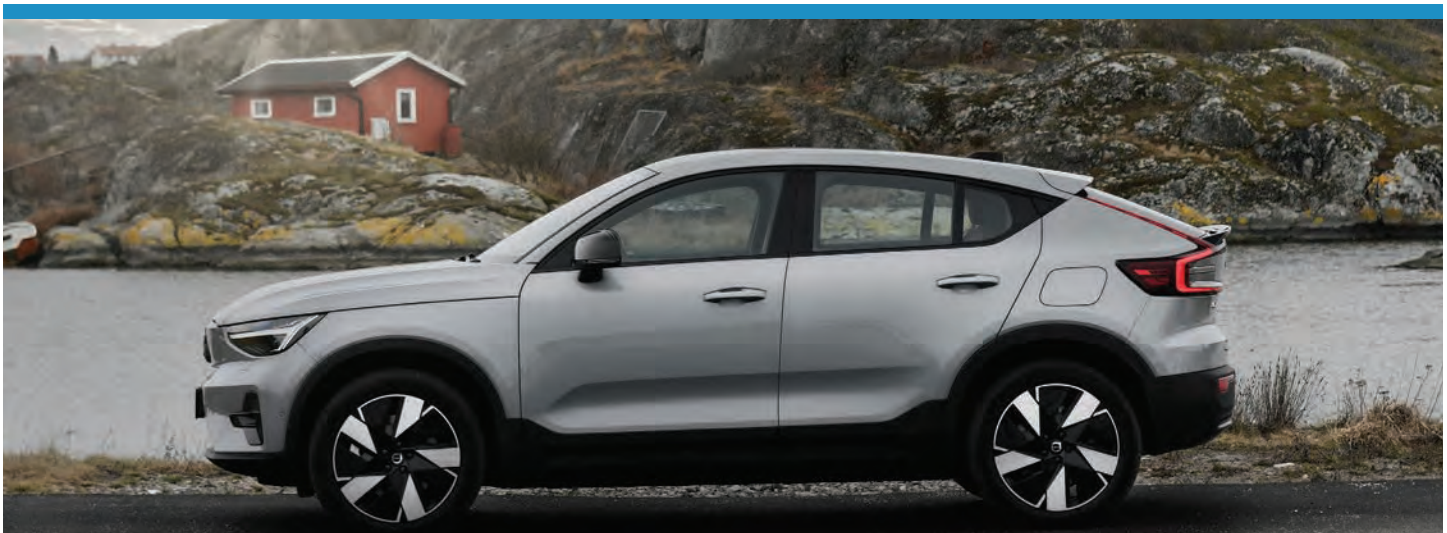


Photo Courtesy Volvo

Volvo C40 Recharge

EPA Electric Range: 297 mi

Max Home/Work Charging Power: 11 kW
(37.1 miles/hour of charge)

Fast Charging Info: 200 kW
(69 miles in 30 minutes of charge)

Starting MSRP: \$53,600

SUV/CROSSOVER



Volvo EX30

Photo Courtesy Volvo

EPA Electric Range: 275 mi

Max Home/Work Charging Power: 11 kW
(34.4 miles/hour of charge)

Fast Charging Info: 153 kW
(69 miles in 26.5 minutes of charge)

Starting MSRP: \$36,245



Photo Courtesy Volvo

Volvo EX90

EPA Electric Range: 308 mi

Max Home/Work Charging Power: 11 kW
(30.8 miles/hour of charge)

Fast Charging Info: 250 kW
(183.3 miles in 30 minutes of charge)

Starting MSRP: \$79,995



Photo Courtesy Volvo

Volvo XC40 Recharge

EPA Electric Range: 293 mi

Max Home/Work Charging Power: 11 kW
(36.6 miles/hour of charge)

Fast Charging Info: 150 kW
(135.8 miles in 28 minutes of charge)

Starting MSRP: \$52,450



SEDAN



Photo Courtesy Audi

Audi A6 e-tron

EPA Electric Range: 388 mi

Max Home/Work Charging Power: 9.6 kW
(34.8 miles/hour of charge)

Fast Charging Info: 270 kW
(193 miles in 10 minutes of charge)

Starting MSRP: \$80,000



Photo Courtesy Audi

Audi e-tron GT

EPA Electric Range: 249 mi

Max Home/Work Charging Power: 9.6 kW
(24 miles/hour of charge)

Fast Charging Info: 270 kW
(180 miles in 22 minutes of charge)

Starting MSRP: \$106,500



Photo Courtesy BMW

BMW i4

EPA Electric Range: 301 mi

Max Home/Work Charging Power: 11 kW
(36.5 miles/hour of charge)

Fast Charging Info: 200 kW
(80% in 31 minutes of charge)

Starting MSRP: \$55,245

SEDAN



BMW i5

EPA Electric Range: 271.5 mi

Max Home/Work Charging Power: 11 kW
(27 miles/hour of charge)

Fast Charging Info: 205 kW
(80% in 30 minutes of charge)

Starting MSRP: \$70,000

Photo Courtesy BMW



BMW i7

EPA Electric Range: 300 mi

Max Home/Work Charging Power: 11 kW
(30 miles/hour of charge)

Fast Charging Info: 195 kW
(80 miles in 10 minutes of charge)

Starting MSRP: \$119,300

Photo Courtesy BMW



Dodge Charger EV

EPA Electric Range: 350 mi

Max Home/Work Charging Power: 11 kW
(25 miles/hour of charge)

Fast Charging Info: 350 kW
(267.3 miles in 27 minutes of charge)

Starting MSRP: \$61,590

Photo Courtesy Dodge



SEDAN



Photo Courtesy Genesis

Genesis Electrified G80

EPA Electric Range: 282 mi

Max Home/Work Charging Power: 11 kW
(31.3 miles/hour of charge)

Fast Charging Info: 350 kW
(186.4 miles in 22 minutes of charge)

Starting MSRP: \$74,375



Photo Courtesy Hyundai

Hyundai Ioniq 6

EPA Electric Range: 240-361 mi

Max Home/Work Charging Power: 11 kW
(52.2 miles/hour of charge)

Fast Charging Info: 233 kW
(57.2 miles in 5 minutes of charge)

Starting MSRP: \$37,500



Photo Courtesy Mercedes-Benz

Mercedes-Benz EQS

EPA Electric Range: 352 mi

Max Home/Work Charging Power: 9.6 kW
(30.6 miles/hour of charge)

Fast Charging Info: 200 kW
(86 miles in 15 minutes of charge)

Starting MSRP: \$85,900

SEDAN



Photo Courtesy Polestar

Polestar 2

EPA Electric Range: 247-320 mi

Max Home/Work Charging Power: 11 kW
(40 miles/hour of charge)

Fast Charging Info: 205 kW
(189.4 miles in 28 minutes of charge)

Starting MSRP: \$49,900



Photo Courtesy Tesla

Tesla Model 3

EPA Electric Range: 272-363 mi

Max Home/Work Charging Power: 11.5 kW
(37 miles/hour of charge)

Fast Charging Info: 250 kW
(17 miles in 15 minutes of charge)

Starting MSRP: \$44,130



Photo Courtesy Tesla

Tesla Model S

EPA Electric Range: 402 mi

Max Home/Work Charging Power: 12 kW
(26.8 miles/hour of charge)

Fast Charging Info: 250 kW
(200 miles in 15 minutes of charge)

Starting MSRP: \$76,630



MINIVAN/WAGON/VAN



Photo Courtesy Ford

Ford E-Transit

EPA Electric Range: 159 mi

Max Home/Work Charging Power: 11 kW
(26.5 miles/hour of charge)

Fast Charging Info: 180 kW
(67 miles in 15 minutes of charge)

Starting MSRP: \$51,095



Photo Courtesy Mercedes-Benz

Mercedes-Benz eSprinter

EPA Electric Range: 206 mi

Max Home/Work Charging Power: 9.6 kW
(16.5 miles/hour of charge)

Fast Charging Info: 115 kW
(80% in 32 minutes of charge)

Starting MSRP: \$63,475



Photo Courtesy Volkswagen

Volkswagen ID.BUZZ

EPA Electric Range: 242 mi

Max Home/Work Charging Power: 11 kW
(36.7 miles/hour of charge)

Fast Charging Info: 170 kW
(80% in 30 minutes of charge)

Starting MSRP: \$60,000

PICKUP TRUCK

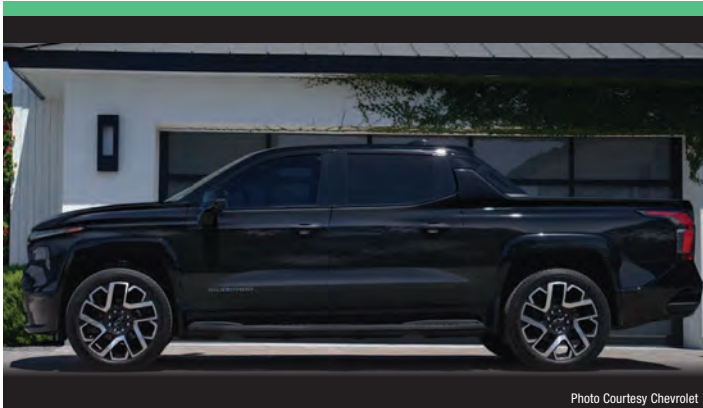


Photo Courtesy Chevrolet

Chevrolet Silverado EV

EPA Electric Range: 440 mi

Max Home/Work Charging Power: 19.2 kW
(34.6 miles/hour of charge)

Fast Charging Info: 350 kW
(100 miles in 10 minutes of charge)

Starting MSRP: \$94,500



Photo Courtesy Ford

Ford F-150 Lightning

EPA Electric Range: 240-320 mi

Max Home/Work Charging Power: 11.5 kW
(19 miles/hour of charge)

Fast Charging Info: 150 kW
(41 miles in 10 minutes of charge)

Starting MSRP: \$62,995



Photo Courtesy GMC

GMC Hummer EV Pickup

EPA Electric Range: 314 mi

Max Home/Work Charging Power: 19.2 kW
(29 miles/hour of charge)

Fast Charging Info: 350 kW
(100 miles in 14 minutes of charge)

Starting MSRP: \$98,845



Photo Courtesy GMC

GMC Sierra EV Denali

EPA Electric Range: 440 mi

Max Home/Work Charging Power: 19.2 kW
(34 miles/hour of charge)

Fast Charging Info: 350 kW
(100 miles in 10 minutes of charge)

Starting MSRP: \$99,495



PICKUP TRUCK



Ramen 1500 REV

Photo Courtesy Ram

EPA Electric Range: 500 mi

Max Home/Work Charging Power: TBA
(miles/hour of charge TBA)

Fast Charging Info: 350 kW
(110 miles in 10 minutes of charge)

Starting MSRP: \$58,000



Photo Courtesy Rivian

Rivian R1T

EPA Electric Range: 420 mi

Max Home/Work Charging Power: 11.5 kW
(29.8 miles/hour of charge)

Fast Charging Info: 220 kW
(140 miles in 20 minutes of charge)

Starting MSRP: \$69,900



Photo Courtesy Tesla

Tesla Cybertruck

EPA Electric Range: 340 mi

Max Home/Work Charging Power: 11.5 kW
(21.8 miles/hour of charge)

Fast Charging Info: 250 kW
(136 miles in 15 minutes of charge)

Starting MSRP: \$81,895

SPORTS CAR



Porsche 718 Boxster EV

EPA Electric Range: 250+ mi

Max Home/Work Charging Power: TBA
(miles/hour of charge TBA)

Fast Charging Info: 270 kW
(miles in minutes of charge TBA)

Starting MSRP: \$78,000



Porsche 718 Cayman EV

EPA Electric Range: 250+ mi

Max Home/Work Charging Power: TBA
(miles/hour of charge TBA)

Fast Charging Info: TBA
(miles in minutes of charge TBA)

Starting MSRP: \$78,000



Porsche Taycan

EPA Electric Range: 274 mi

Max Home/Work Charging Power: 9.6 kW
(23.8 miles/hour of charge)

Fast Charging Info: 320 kW
(211.3 miles in 19 minutes of charge)

Starting MSRP: \$99,400



ULTRA-LUXURY/LIMITED EDITION



Photo Courtesy Lucid

Lucid Air Dream AWD

EPA Electric Range: 451 mi

Max Home/Work Charging Power: 19.2 kW
(35 miles/hour of charge)

Fast Charging Info: 300 kW
(300 miles in 20 minutes of charge)

Starting MSRP: \$170,500



Photo Courtesy Porsche

Porsche Taycan 4 Cross Turismo

EPA Electric Range: 277 mi

Max Home/Work Charging Power: 11 kW
(23.1 miles/hour of charge)

Fast Charging Info: 320 kW
(226.2 miles in 18 minutes of charge)

Starting MSRP: \$111,100



Photo Courtesy Porsche

Porsche Taycan Turbo

EPA Electric Range: 275 mi

Max Home/Work Charging Power: 22 kW
(45.8 miles/hour of charge)

Fast Charging Info: 320 kW
(160 miles in 18 minutes of charge)

Starting MSRP: \$160,800

COMPACT/HATCHBACK



Photo Courtesy Fiat

Fiat 500e

EPA Electric Range: 162 mi

Max Home/Work Charging Power: 9.6 kW
(30 miles/hour of charge)

Fast Charging Info: 85 kW
(31 miles in 5 minutes of charge)

Starting MSRP: \$32,500

COMPACT/HATCHBACK



Photo Courtesy Hyundai

Hyundai Kona Electric

EPA Electric Range: 200-261 mi

Max Home/Work Charging Power: 11 kW
(34.4 miles/hour of charge)

Fast Charging Info: 100 kW
(200 miles in 54 minutes of charge)

Starting MSRP: \$32,875



Photo Courtesy Kia

Kia Niro EV

EPA Electric Range: 253 mi

Max Home/Work Charging Power: 11 kW
(33.7 miles/hour of charge)

Fast Charging Info: 85 kW
(39.8 miles in 10 minutes of charge)

Starting MSRP: \$39,600



Photo Courtesy Mini

Mini Cooper SE

EPA Electric Range: 114 mi

Max Home/Work Charging Power: 11 kW
(29 miles/hour of charge)

Fast Charging Info: 50 kW
(91 miles in 35 minutes of charge)

Starting MSRP: \$30,900



Photo Courtesy Nissan

Nissan LEAF Plus

EPA Electric Range: 212 mi

Max Home/Work Charging Power: 6.6 kW
(19 miles/hour of charge)

Fast Charging Info: 100 kW
(180 miles in 45 minutes of charge)

Starting MSRP: \$36,190



PLUG-IN HYBRID CARS

- Plug-in hybrid cars available as of August 2024 discontinued models or older model years may still be available.
- Range sources: www.fueleconomy.gov and automaker specifications.
- Range per hour of charging assumes home or workplace Level 2 charging (i.e., 240V).
- Starting MSRP is retrieved from automaker websites and may vary.
- Vehicles are available nationwide unless designated “Select Markets” in their individual listing.
- Despite industry classifications of five-door vehicles as crossovers or compact SUVs, this guide categorizes them as hatchbacks unless they are offered with all-wheel drive.

SUV/CROSSOVER



Alfa Romeo Tonale

EPA Electric Range: 33 mi
EPA Total Range (gas + electric): 320 mi
Max Home/Work Charging Power: 7 kW
(8.25 miles/hour of charge)
Fast Charging Info: N/A
Starting MSRP: \$43,845



Audi Q5 TFSI e

EPA Electric Range: 23 mi
EPA Total Range (gas + electric): 390 mi
Max Home/Work Charging Power: 7.2 kW
(8 miles/hour of charge)
Fast Charging Info: N/A
Starting MSRP: \$55,400

SUV/CROSSOVER



Photo Courtesy BMW

BMW X5 xDrive50e

EPA Electric Range: 40 mi
EPA Total Range (gas + electric): 400 mi
Max Home/Work Charging Power: 9.6 kW
(30 miles/hour of charge)
Fast Charging Info: N/A
Starting MSRP: \$73,100



Photo Courtesy Dodge

Dodge Hornet R/T

EPA Electric Range: 32 mi
EPA Total Range (gas + electric): 360 mi
Max Home/Work Charging Power: 7.4 kW
(12.8 miles/hour of charge)
Fast Charging Info: N/A
Starting MSRP: \$41,400



Photo Courtesy Hyundai

Hyundai Tucson PHEV

EPA Electric Range: 33 mi
EPA Total Range (gas + electric): 420 mi
Max Home/Work Charging Power: 7.2 kW
(16.5 miles/hour of charge)

Fast Charging Info: N/A
Starting MSRP: \$38,725



PLUG-IN HYBRID CARS

SUV/CROSSOVER



Jeep Grand Cherokee 4xe

EPA Electric Range: 25 mi

EPA Total Range (gas + electric): 470 mi

Max Home/Work Charging Power: 7.2 kW
(10 miles/hour of charge)

Fast Charging Info: N/A

Starting MSRP: \$60,490



Jeep Wrangler 4xe

EPA Electric Range: 22 mi

EPA Total Range (gas + electric): 370 mi

Max Home/Work Charging Power: 7.4 kW
(9 miles/hour of charge)

Fast Charging Info: N/A

Starting MSRP: \$50,695



Kia Sorento PHEV

EPA Electric Range: 30 mi

EPA Total Range (gas + electric): 460 mi

Max Home/Work Charging Power: 3.3 kW
(7.5 miles/hour of charge)

Fast Charging Info: N/A

Starting MSRP: \$47,990



Kia Sportage PHEV

EPA Electric Range: 34 mi

EPA Total Range (gas + electric): 430 mi

Max Home/Work Charging Power: 7.2 kW
(17 miles/hour of charge)

Fast Charging Info: N/A

Starting MSRP: \$39,690

SUV/CROSSOVER



Photo Courtesy Land Rover

Land Rover Range Rover

EPA Electric Range: 53 mi

EPA Total Range (gas + electric): 480 mi

Max Home/Work Charging Power: 7 kW
(5 miles/hour of charge)

Fast Charging Info: 43 kW
(80% in 40 minutes of charge)

Starting MSRP: \$119,900



Photo Courtesy Land Rover

Land Rover Range Rover Sport PHEV

EPA Electric Range: 53 mi

EPA Total Range (gas + electric): 480 mi

Max Home/Work Charging Power: 7 kW
(6 miles/hour of charge)

Fast Charging Info: 43 kW
(80% in 40 minutes of charge)

Starting MSRP: \$118,200



Photo Courtesy Lexus

Lexus NX 450h+

EPA Electric Range: 37 mi

EPA Total Range (gas + electric): 550 mi

Max Home/Work Charging Power: 6.6 kW
(8.2 miles/hour of charge)

Fast Charging Info: N/A

Starting MSRP: \$62,415



Photo Courtesy Lexus

Lexus RX 450h+

EPA Electric Range: 37 mi

EPA Total Range (gas + electric): 500 mi

Max Home/Work Charging Power: 6.6 kW
(14.8 miles/hour of charge)

Fast Charging Info: N/A

Starting MSRP: \$70,580



SUV/CROSSOVER



Photo Courtesy Lexus

Lexus TX 550h+

EPA Electric Range: 33 mi

EPA Total Range (gas + electric): 450 mi

Max Home/Work Charging Power: 6.6 kW
(11.2 miles/hour of charge)

Fast Charging Info: N/A

Starting MSRP: \$78,050



Photo Courtesy Lincoln

Lincoln Corsair Grand Touring

EPA Electric Range: 27 mi

EPA Total Range (gas + electric): 420 mi

Max Home/Work Charging Power: 6.6 kW
(6.7 miles/hour of charge)

Fast Charging Info: N/A

Starting MSRP: \$54,265



Photo Courtesy Mazda

Mazda CX-70

EPA Electric Range: 26 mi

EPA Total Range (gas + electric): 490 mi

Max Home/Work Charging Power: 7.2 kW
(17.3 miles/hour of charge)

Fast Charging Info: N/A

Starting MSRP: \$40,445



Photo Courtesy Mazda

Mazda CX-90

EPA Electric Range: 26 mi

EPA Total Range (gas + electric): 490 mi

Max Home/Work Charging Power: 7.2 kW
(17.3 miles/hour of charge)

Fast Charging Info: N/A

Starting MSRP: \$37,845

SUV/CROSSOVER



Photo Courtesy Mercedes-Benz

Mercedes-Benz GLC 350e

EPA Electric Range: 54 mi

EPA Total Range (gas + electric): TBA

Max Home/Work Charging Power: 11 kW
(6 miles/hour of charge)

Fast Charging Info: 60 kW
(80% in 30 minutes of charge)

Starting MSRP: \$59,900



Photo Courtesy Mercedes-Benz

Mercedes-Benz GLE 450e

EPA Electric Range: 49 mi

EPA Total Range (gas + electric): 412 mi

Max Home/Work Charging Power: 9.6 kW
(17.8 miles/hour of charge)

Fast Charging Info: 60 kW
(60 miles in 20 minutes of charge)

Starting MSRP: \$71,350



Photo Courtesy Mini

Mini Countryman All4 PHEV

EPA Electric Range: 12 mi

EPA Total Range (gas + electric): 270 mi

Max Home/Work Charging Power: 3.7 kW
(4.8 miles/hour of charge)

Fast Charging Info: N/A

Starting MSRP: \$36,800



Photo Courtesy Mitsubishi

Mitsubishi Outlander PHEV

EPA Electric Range: 38 mi

EPA Total Range (gas + electric): 420 mi

Max Home/Work Charging Power: 3.7 kW
(5.8 miles/hour of charge)

Fast Charging Info: 50 kW
(27 miles in 37 minutes of charge)

Starting MSRP: \$40,345



PLUG-IN HYBRID CARS

SUV/CROSSOVER



Photo Courtesy Porsche

Porsche Cayenne E-Hybrid

EPA Electric Range: 17 mi

EPA Total Range (gas + electric): 430 mi

Max Home/Work Charging Power: 7.2 kW
(6 miles/hour of charge)

Fast Charging Info: N/A

Starting MSRP: \$97,200

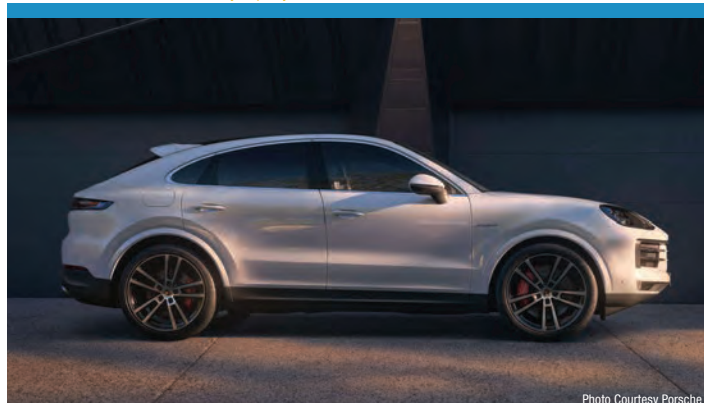


Photo Courtesy Porsche

Porsche Cayenne E-Hybrid Coupe

EPA Electric Range: 17 mi

EPA Total Range (gas + electric): 430 mi

Max Home/Work Charging Power: 11 kW
(6 miles/hour of charge)

Fast Charging Info: N/A

Starting MSRP: \$101,200



Photo Courtesy Subaru

Subaru Crosstrek Hybrid

EPA Electric Range: 17 mi

EPA Total Range (gas + electric): 480 mi

Max Home/Work Charging Power: 3.3 kW
(8 miles/hour of charge)

Fast Charging Info: N/A

Starting MSRP: \$35,345

SUV/CROSSOVER



Toyota RAV4 Prime

Photo Courtesy Toyota

EPA Electric Range: 42 mi
EPA Total Range (gas + electric): 600 mi
Max Home/Work Charging Power: 6.6 kW
(16.8 miles/hour of charge)

Fast Charging Info: N/A
Starting MSRP: \$43,690



Photo Courtesy Volvo

Volvo XC60 Recharge PHEV

EPA Electric Range: 35 mi
EPA Total Range (gas + electric): 560 mi
Max Home/Work Charging Power: 3.6 kW
(7 miles/hour of charge)

Fast Charging Info: N/A
Starting MSRP: \$57,900



Photo Courtesy Volvo

Volvo XC90 Recharge PHEV

EPA Electric Range: 32 mi
EPA Total Range (gas + electric): 530 mi
Max Home/Work Charging Power: 3.6 kW
(6.4 miles/hour of charge)

Fast Charging Info: N/A
Starting MSRP: \$71,900



SEDAN



Photo Courtesy Audi

Audi A7 TFSI e

EPA Electric Range: 26 mi

EPA Total Range (gas + electric): 410 mi

Max Home/Work Charging Power: 7.2 kW
(9 miles/hour of charge)

Fast Charging Info: N/A

Starting MSRP: \$72,000



Photo Courtesy BMW

BMW 330e

EPA Electric Range: 23 mi

EPA Total Range (gas + electric): 320 mi

Max Home/Work Charging Power: 3.7 kW
(8 miles/hour of charge)

Fast Charging Info: N/A

Starting MSRP: \$45,600



Photo Courtesy BMW

BMW 530e

EPA Electric Range: 21 mi

EPA Total Range (gas + electric): 350 mi

Max Home/Work Charging Power: 3.7 kW
(7 miles/hour of charge)

Fast Charging Info: N/A

Starting MSRP: \$55,550



Photo Courtesy BMW

BMW 550e xDrive

EPA Electric Range: TBA

EPA Total Range (gas + electric): TBA

Max Home/Work Charging Power: TBA
(miles/hour of charge TBA)

Fast Charging Info: N/A

Starting MSRP: \$72,700

SEDAN



Photo Courtesy BMW

BMW 745e xDrive

EPA Electric Range: 16 mi
EPA Total Range (gas + electric): 290 mi
Max Home/Work Charging Power: 4 kW
(4 miles/hour of charge)
Fast Charging Info: N/A
Starting MSRP: \$95,900



Photo Courtesy BMW

BMW 750e xDrive

EPA Electric Range: 36 mi
EPA Total Range (gas + electric): 470 mi
Max Home/Work Charging Power: 7.4 kW
(47 miles/hour of charge)
Fast Charging Info: N/A
Starting MSRP: \$107,000



Photo Courtesy Porsche

Porsche Panamera 4 E-Hybrid

EPA Electric Range: 19 mi
EPA Total Range (gas + electric): 480 mi
Max Home/Work Charging Power: 11 kW
(6 miles/hour of charge)
Fast Charging Info: N/A
Starting MSRP: \$115,500



Photo Courtesy Volvo

Volvo S90 Recharge PHEV

EPA Electric Range: 38 mi
EPA Total Range (gas + electric): 520 mi
Max Home/Work Charging Power: 3.6 kW
(7.6 miles/hour of charge)
Fast Charging Info: N/A
Starting MSRP: \$65,650



PLUG-IN HYBRID CARS

MINIVAN/WAGON/VAN



Photo Courtesy Chrysler

Chrysler Pacifica Hybrid

EPA Electric Range: 32 mi

EPA Total Range (gas + electric): 520 mi

Max Home/Work Charging Power: 6.6 kW
(16 miles/hour of charge)

Fast Charging Info: N/A

Starting MSRP: \$51,250



Photo Courtesy Volvo

Volvo V60 Recharge PHEV

EPA Electric Range: 41 mi

EPA Total Range (gas + electric): 530 mi

Max Home/Work Charging Power: 3.6 kW
(8.2 miles/hour of charge)

Fast Charging Info: N/A

Starting MSRP: \$71,250

PICKUP TRUCK



Photo Courtesy Jeep

Jeep Gladiator 4xe

EPA Electric Range: 21 mi

EPA Total Range (gas + electric): 370 mi

Max Home/Work Charging Power: 7.2 kW
(10.5 miles/hour of charge)

Fast Charging Info: N/A

Starting MSRP: \$58,000



Photo Courtesy Ram

Ram 1500 Ramcharger

EPA Electric Range: 145 mi

EPA Total Range (gas + electric): 690 mi

Max Home/Work Charging Power: TBA

Fast Charging Info: 145 kW
(50 miles in 10 minutes of charge)

Starting MSRP: \$60,000

ULTRA-LUXURY/LIMITED EDITION



Photo Courtesy Ferrari

Ferrari SF90 Stradale Coupe

EPA Electric Range: 9 mi
EPA Total Range (gas + electric): 330 mi
Max Home/Work Charging Power: 3.6 kW
(4 miles/hour of charge)
Fast Charging Info: N/A
Starting MSRP: \$516,295



Photo Courtesy Porsche

Porsche Cayenne Turbo S E-Hybrid

EPA Electric Range: 15 mi
EPA Total Range (gas + electric): 370
Max Home/Work Charging Power: 7.2 kW
(5 miles/hour of charge)
Fast Charging Info: N/A
Starting MSRP: \$163,200



Photo Courtesy Porsche

Porsche Cayenne Turbo S E-Hybrid Coupe

EPA Electric Range: 15 mi
EPA Total Range (gas + electric): 370
Max Home/Work Charging Power: 7.2 kW
(5 miles/hour of charge)
Fast Charging Info: N/A
Starting MSRP: \$161,900



Photo Courtesy Porsche

Porsche Panamera Turbo S E-Hybrid

EPA Electric Range: 31 mi
EPA Total Range (gas + electric): 430 mi
Max Home/Work Charging Power: 11 kW
(9.4 miles/hour of charge)
Fast Charging Info: N/A
Starting MSRP: \$226,500



PLUG-IN HYBRID CARS

COMPACT/HATCHBACK



Photo Courtesy Ford

Ford Escape PHEV

EPA Electric Range: 37 mi

EPA Total Range (gas + electric): 530 mi

Max Home/Work Charging Power: 3.3 kW
(11 miles/hour of charge)

Fast Charging Info: N/A

Starting MSRP: \$38,400



Photo Courtesy Kia

Kia Niro PHEV

EPA Electric Range: 33 mi

EPA Total Range (gas + electric): 560 mi

Max Home/Work Charging Power: 3.3 kW
(12 miles/hour of charge)

Fast Charging Info: N/A

Starting MSRP: \$34,390

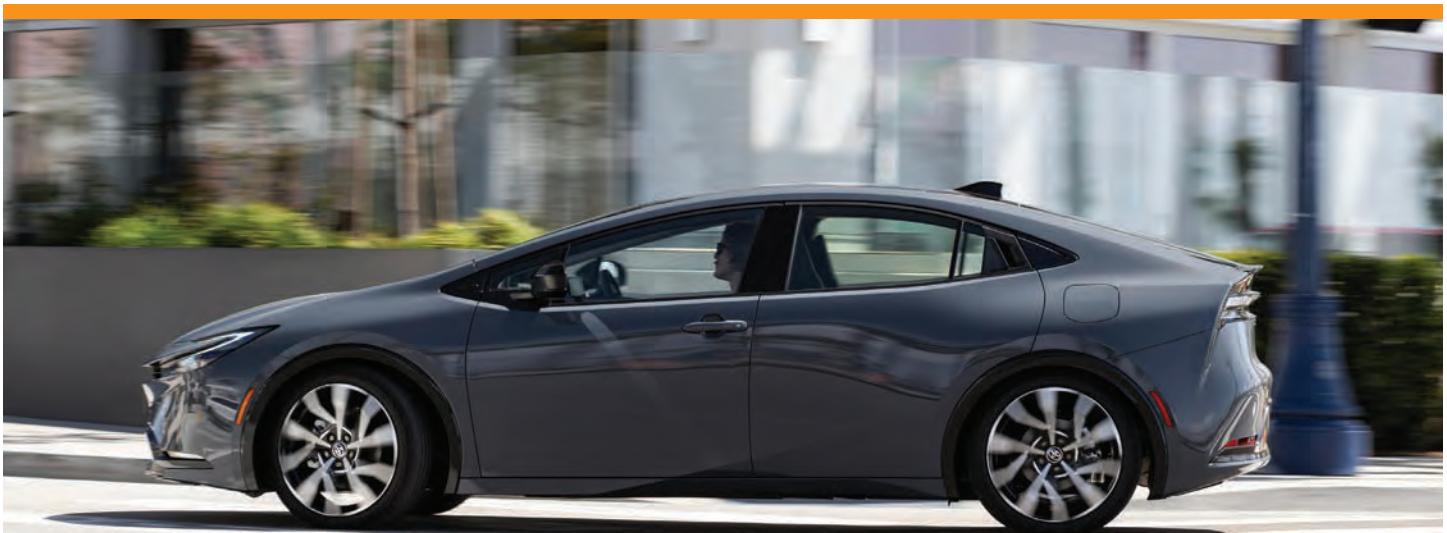


Photo Courtesy Toyota

Toyota Prius Prime

EPA Electric Range: 44 mi

EPA Total Range (gas + electric): 600 mi

Max Home/Work Charging Power: 3.3 kW
(11 miles/hour of charge)

Fast Charging Info: N/A

Starting MSRP: \$32,975

HOW DO I CHARGE?

WHERE CAN I CHARGE AND HOW LONG DOES IT TAKE?

With gas cars, you stop at a gas station to refuel while on the road. With an electric car you charge at home, at work, or on the road. Simply plug it in, like your smart phone or computer; your car charges while you sleep, work, or play.

Most drivers with a driveway or garage prefer the convenience of charging at home. They can either plug into a standard 120-volt household outlet using the cord that comes with the car or install a dedicated 240-volt charging station.

The first option, called Level 1 charging, is the simplest and most economical home-charging solution because it requires no other equipment or installation provided the 120-volt outlet is up to date. Charging at Level 1 (typically 1.4 to 1.9 kW) adds roughly 3 to 5 miles of range per hour.

A dedicated 240-volt charging station, called Level 2 charging, requires sufficient electrical capacity, and may need to be installed by a licensed electrician. It is similar to the outlet for a clothes dryer or other 240-volt appliance. Charging at Level 2, (typically 3.3 kW to 19.2 kW) delivers roughly 8 to 50 miles of range per hour or more, depending on the car, the charging station, and the electrical service.

Public charging stations and some workplaces also offer Level 2—and sometimes Level 1—charging.

While smaller electric cars can charge at both Level 1 and 2, larger electric cars are equipped to accept an even faster level of charging, called DC fast charging.¹

While DC fast chargers cannot be installed at home, a growing number of fast-charging stations are available in strategic locations nationwide along highway corridors and near shopping centers. The speed at which a car charges at a DC fast charging station varies, depending on the car and the power availability at the station (typically 50 kW to 350 kW) (Figure 2).



FIGURE 2. CHARGING LOCATIONS, LEVELS, AND RANGE REPLENISHED²

¹ Range estimate based on 19.2kW, 90% efficient charging and 0.3333 kWh/mile = 51.8 miles

² The amount of range replenished at all charging levels may vary beyond the numbers shown, depending on the charger type, vehicle, and ambient temperature. DC fast chargers have been deployed covering a range of power capacities from 50 kW to 350 kW. Tesla V2 Superchargers offer 120–150 kW, V3 Superchargers offer up to 250 kW for some Tesla models and V4 Superchargers offer up to 250 kW for multiple brands of electric vehicles.

WHAT ARE KILOWATTS AND KILOWATT-HOURS?

A kilowatt (kW) is a measure of power. A kilowatt-hour (kWh) is a measure of energy, or how much power is used over time. An EV battery's size, measured in kWh, tells you how much energy it may contain and therefore how far the EV can go. The rate at which you use (and recharge) the battery is expressed in kW. To understand their relationship, think of a hose and a bucket. Power (kW) is comparable to the rate of water flowing through the hose. Energy (kWh) is much like the amount of water that collects in the bucket over time.



Figure 3a. Power (kW) is comparable to the rate of water flowing through the hose. Energy (kWh) is much like the amount of water that collects in the bucket over time.



Figure 3b. With high charging power (high kW), the car's battery fills faster than with low charging power (low kW).



Figure 3c. NACS (Tesla) connector



HOW DO KILOWATT-HOURS COMPARE TO GALLONS OF GASOLINE?

Just as internal combustion cars have different size gas tanks, EVs have different size batteries. The amount of energy stored in a typical EV battery varies. The distance the energy takes you in your EV depends on your battery size, how you drive, and factors such as weather. Driving fast, uphill, having a “lead foot,” or running the heat or air-conditioning in your EV increase energy use. Conversely, making frequent stops or driving in stop-and-go traffic and downhill can add energy to your battery. An EV travels roughly 2 to 4 miles on each kWh of energy, so 3 miles per kWh is a good rule of thumb for calculating how many miles your EV can go, based on the kWh in your battery.

Additionally, the EPA uses fuel economy labeling to display data such as range and miles per gallon of gasoline-equivalent (MPGe) which is used for vehicles that do not run on liquid fuels. Window stickers placed on EVs display units of kWh/100 miles of driving to detail the relative efficiency of different vehicles. The figure below is an example of an EV fuel economy label and is not based on an actual vehicle:

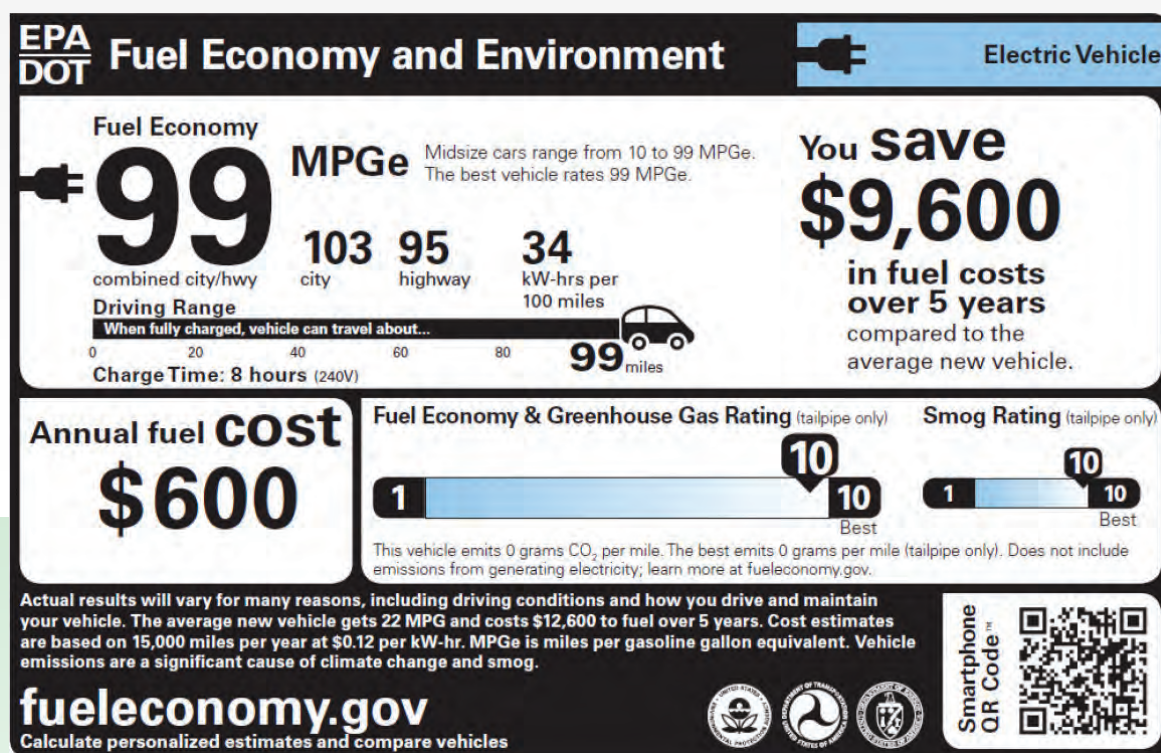
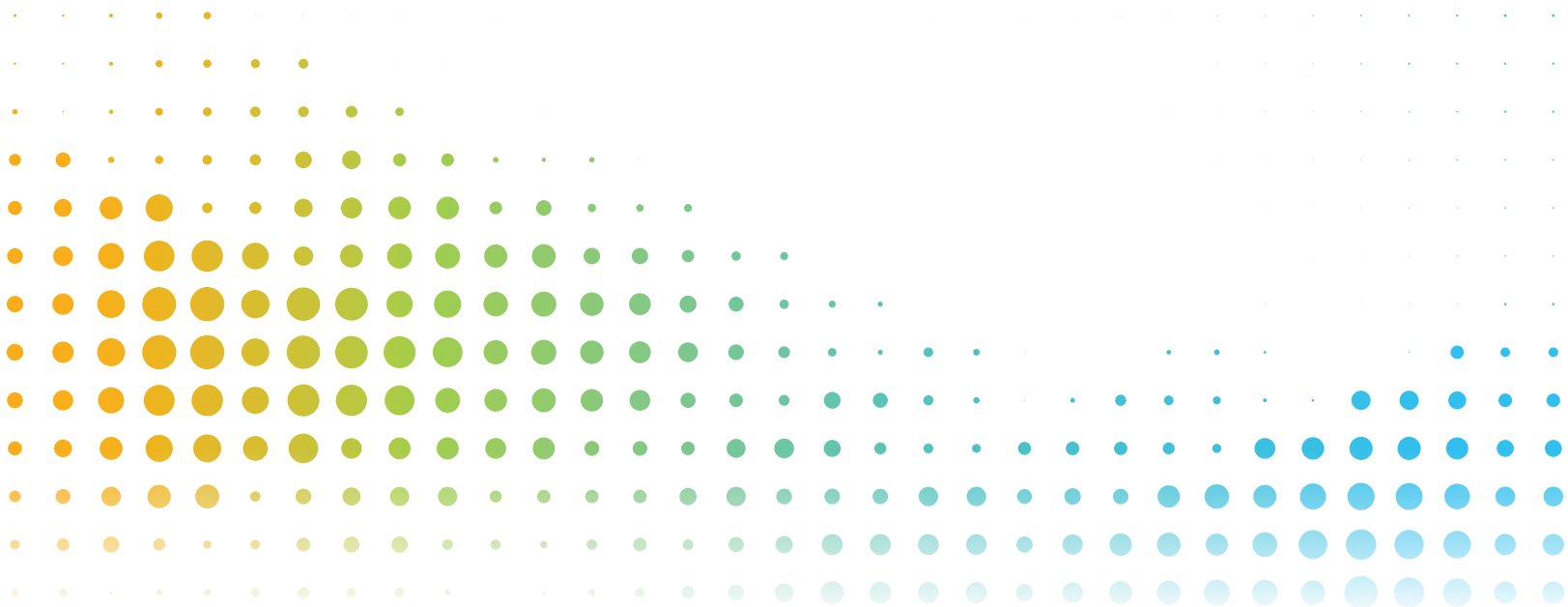


FIGURE 4. EPA EV FUEL ECONOMY LABEL

Some vehicles are available in select markets and may not be available locally. If you are in a ZEV state, there is a higher chance of vehicles being available to purchase. Contact your local dealership to confirm.



For more information about EPRI Electric Transportation research activities contact:

Dan Bowermaster, Sr. Program Manager
Electric Transportation
dbowermaster@epri.com



EPRI

3420 Hillview Avenue, Palo Alto, California 94304-1338 USA
800.313.3774 | 650.855.2121 | askepri@epri.com | www.epri.com

3002031124

Consumer Guide to Electric Vehicles, September 2024